



We are delighted to introduce Woodlands Boutique Retirement Village – an intimate, family owned village in a natural garden setting

We invite you to join a community of active retirees settled in the heart of Bethlehem. A community with access to a full range of facilities, a vegetable garden with a plot for each household, a hobby shed equipped with all the toys to work on personal projects, serenity garden, and the social center of the village, the clubhouse. This is complete with a gym, library, full kitchen and bar facilities. A place to come together and enjoy.

All of this is shared with only 17 homes. Woodlands homes are architecturally designed, with residents' lifestyles in mind. Each home includes solar panels and heat pump as standard inclusions, making each brand new home comfortable, as well as easy to enjoy.

Located in Bethlehem, Woodlands Village has everything you need close at hand. Bethlehem Shopping Centre is located only a short stroll away, putting cafes, restaurants, medical clinics, as well as all your shopping needs - within easy access.

Our position provides easy access to the arterial routes in to Tauranga city (only a 10 minute drive) and the beaches of the Mount (15 minutes drive), allowing you to enjoy everything the area has to offer.

We welcome you to contact us for more information,

Sarndra Newman

Sarndra Newman,
Director
Woodlands Boutique Village

M: 021 0265 3536

E: woodlands@kinect.co.nz

www.woodlandsboutiquevillage.co.nz



General description: Boutique luxury gated retirement village in a natural setting.

Features of the homes: Generous house sizes - 160 m² to 190 m² approx.

Architecturally designed, luxuriously appointed with landscaped gardens. Both stand alone and duplex residences available.

Features include:-

- Two or three bedrooms homes with en-suite & walk in robe
- 2.7 m high ceilings
- Stone bench top in kitchen
- High quality fixtures and fittings, carpet and tiles
- Carpeted garages
- Double glazing
- LED lighting
- High speed broadband (fibre)
- Fully insulated including garage
- Rendered and painted brick exterior and cedar

Number of Dwellings: 17 in total - *only 2 homes still available*



Special features:

Close to Bethlehem Shopping Centre
Perimeter security feature fencing and security gates
Northerly aspect to all homes
Heat pump efficient heating system
Solar panels
Rainwater collection tanks slim line, additional to town supply
Mature native forest grove
Established bird life

Ancillary buildings and facilities:

Club house, with cooking/bar facilities, lounge/TV area, gym and change rooms
Serenity garden with water feature set amongst established native trees
Individual elevated vegetable garden plots with compost bins, worm farm & garden shed
Tool shed, with workbench & hand tools

General:

Located walking distance from supermarket, shops, & cafes
Close to medical centres, dental facilities, chemists
Public transport handy
10 minute drive to central Tauranga
Four other friendly villages in the area



Priced from:	\$850,000
Contractual status:	Licence to Occupy. 10% deposit. Balance on Settlement
Management fee:	7.5% per year for a maximum of 4 years (30% total)
Body corporate fee:	\$189 per week The items this fee contributes to includes: Council rates, Insurance, Water, General Maintenance & Gardening, Communal Power to Club House etc.

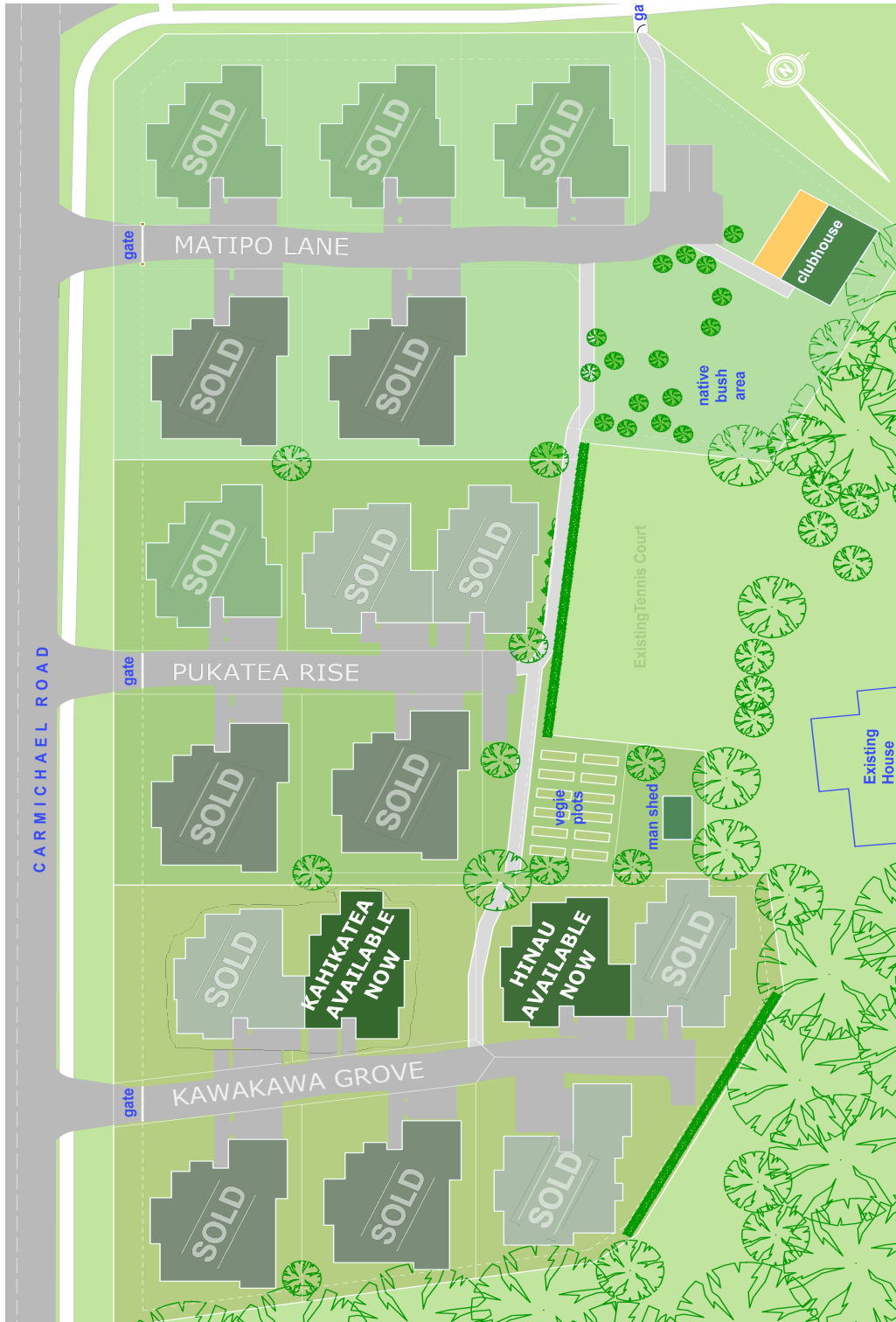
To book a tour of the village or find out more please contact:

Sarndra Newman -
Manager Woodlands
Boutique Village
M: 021 0265 3536
E: woodlands@kinect.co.nz

WOODLANDS

BOUTIQUE RETIREMENT VILLAGE

Village layout





WOODLANDS

BOUTIQUE RETIREMENT VILLAGE

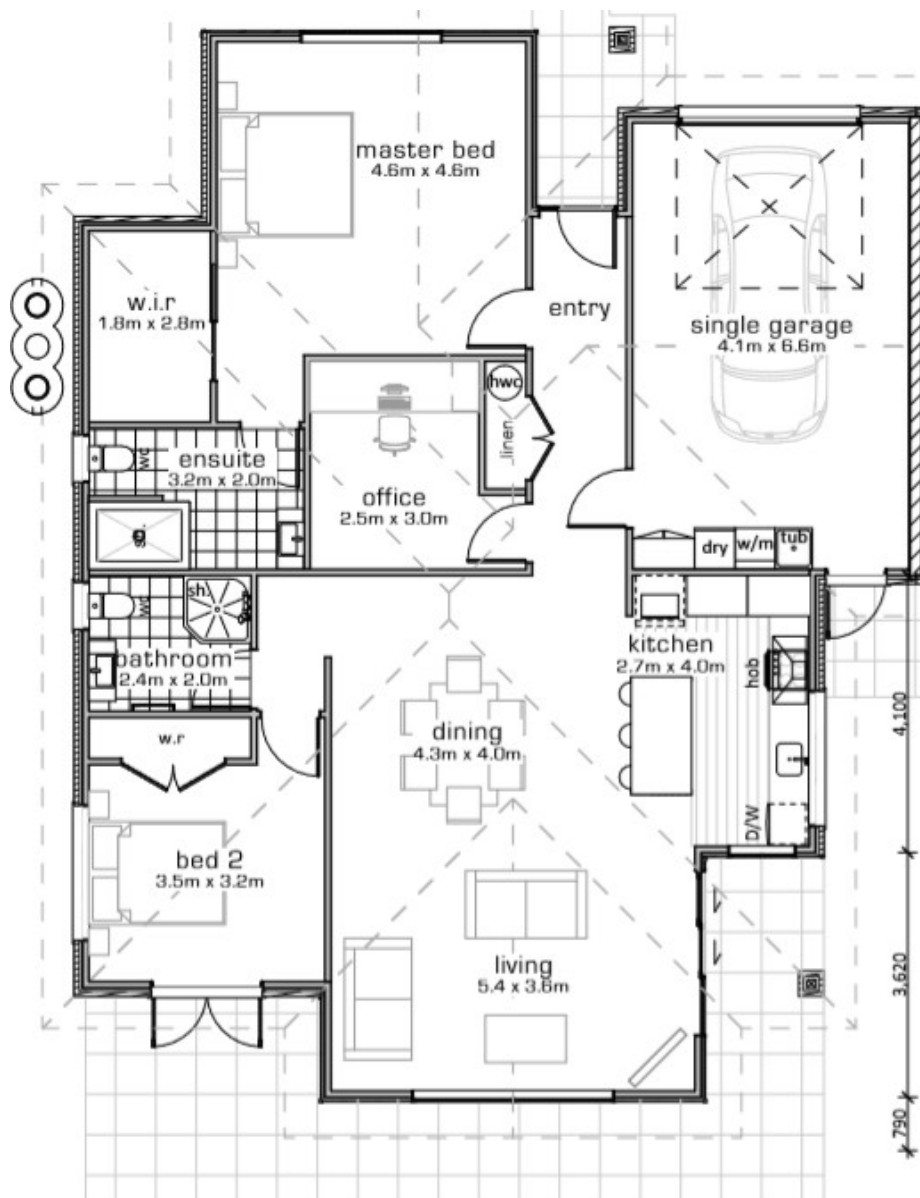
Kawakawa Grove FINAL HOMES AVAILABLE



Duplex
Kahikatea

Kahikatea is a duplex located on Kawakawa Grove featuring two spacious bedrooms, an office and single garage.

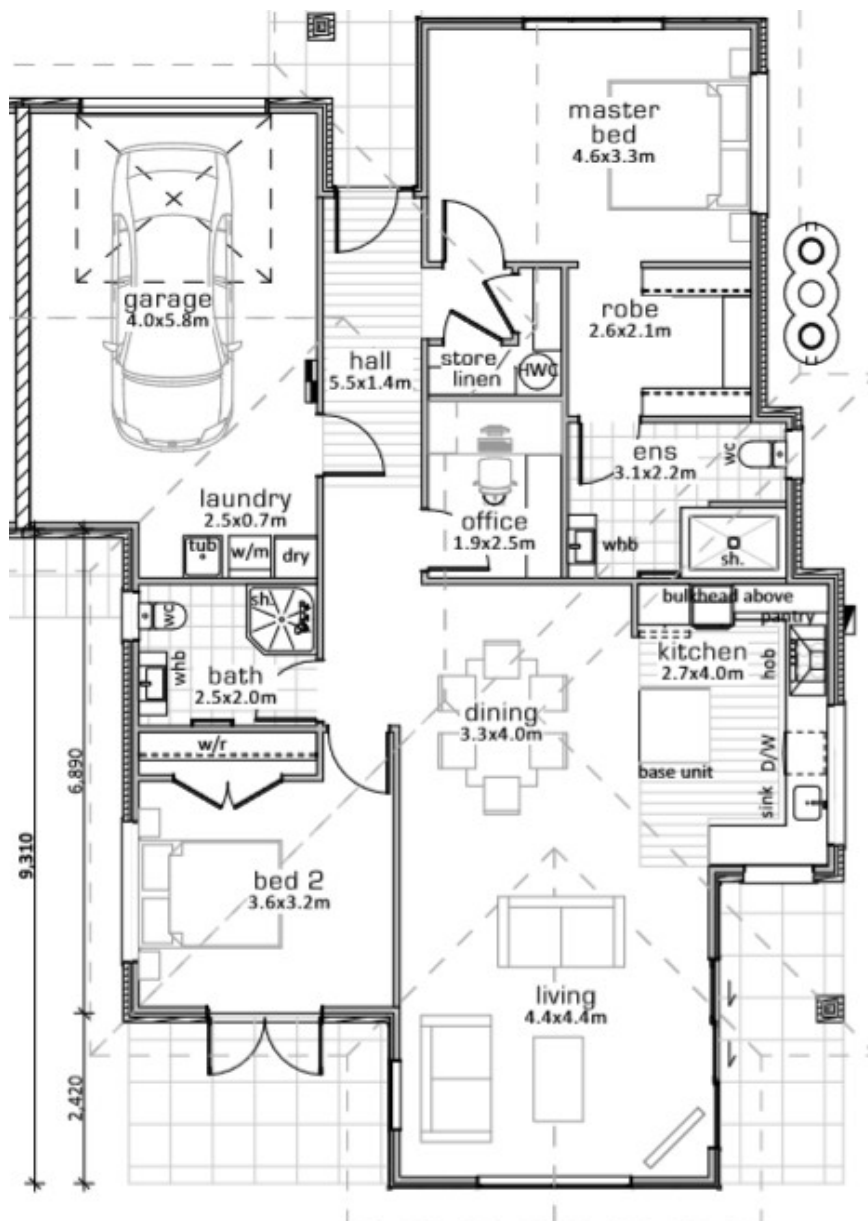
Kahikatea is available now.



Duplex
Hinau

Hinau is a duplex located on Kawakawa Grove featuring two spacious bedrooms, an office and single garage.

Hinau is available now.



WOODLANDS

BOUTIQUE RETIREMENT VILLAGE

Clubhouse

Woodlands Boutique Village Club house, with cooking/bar facilities, lounge/TV area, gym and change rooms.





Serenity garden

The serenity garden at Woodlands is not only home to our native tree grove, rockery plantings and the beautiful waterfall, but some of our smallest residents - a friendly school of goldfish.



*Call Sarndra Newman for further info: 021 0265 3536
email: woodlands@kinect.co.nz*

WOODLANDS

BOUTIQUE RETIREMENT VILLAGE

Hobby Shed + Vege Garden

A hub of activity with a range of manual hand tools for your projects and a garden plot for every household.



*Call Sarndra Newman for further info: 021 0265 3536
email: woodlands@kinect.co.nz*